

FORMER RESTAURANT LAND & BUILDING (2,915 SF): FOR LEASE

- CAN REDEVELOP -

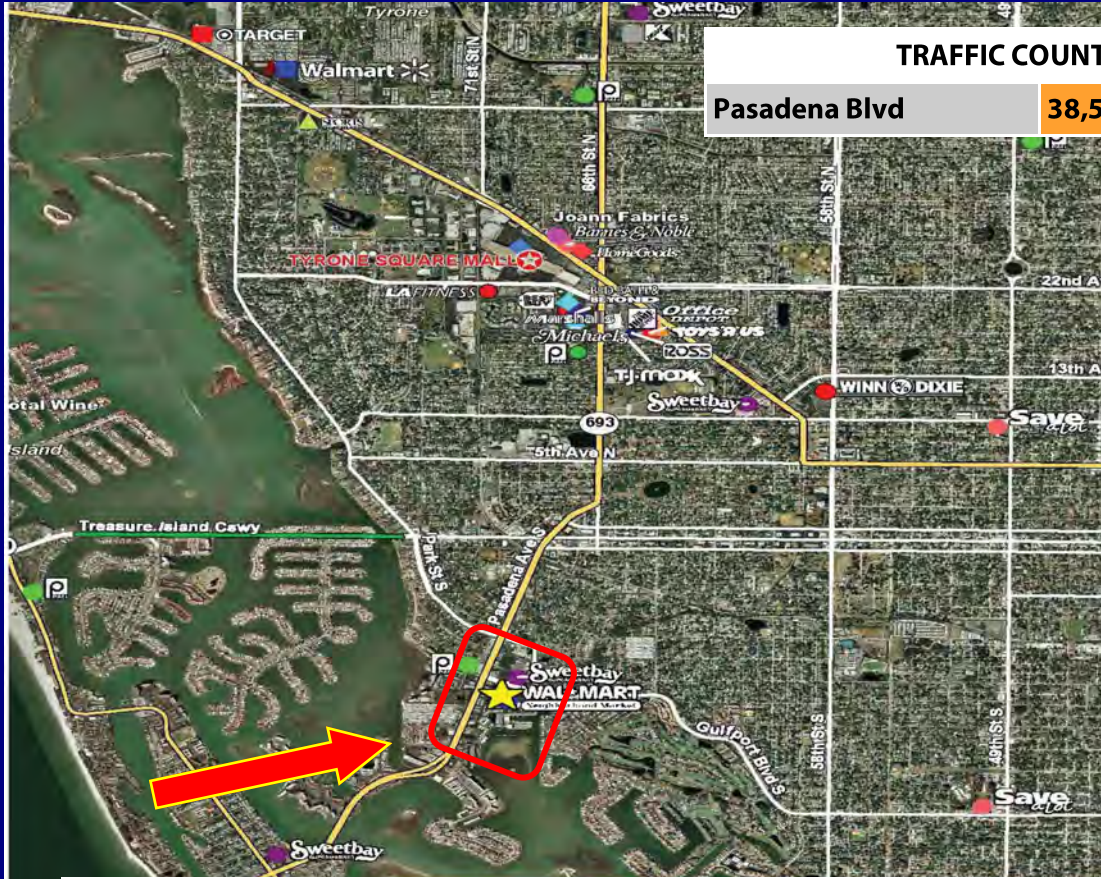
SOUTH PASADENA, PINELLAS COUNTY FLORIDA

Steve Stone
Metro Bay Associates, Inc.

Steve@StoneCommercialProperties.com

727-804-5043 cell

727-446-7205 fax



TRAFFIC COUNTS

Pasadena Blvd

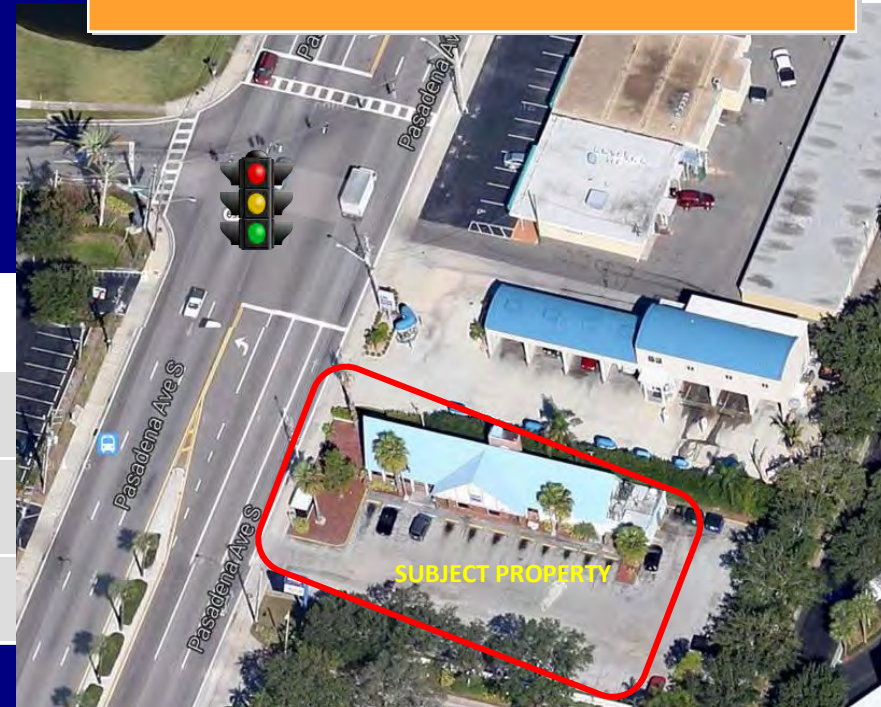
38,500 ADT

1290 Pasadena Ave S.
South Pasadena, FL 33707

Market Serves South Saint Petersburg / Tyrone, Gulfport,
Pasadena & N. St. Pete Beach

Adjacent to Famous

"Ted Peters Smoked Fish House"



DEMOGRAPHICS	1 Mile	3 Mile	5 Mile
Residential Population	10,789	72,665	178,598
Daytime Population	4,643	25,592	66,251
Average HHI \$	\$69,123	\$64,404	\$60,684

FORMER RESTAURANT LAND & BUILDING (2,915 SF): FOR LEASE

- CAN REDEVELOP -

SOUTH PASADENA, PINELLAS COUNTY FLORIDA

Steve Stone
Metro Bay Associates, Inc.

Steve@StoneCommercialProperties.com

727-804-5043 cell

727-446-7205 fax

SITE PLAN

